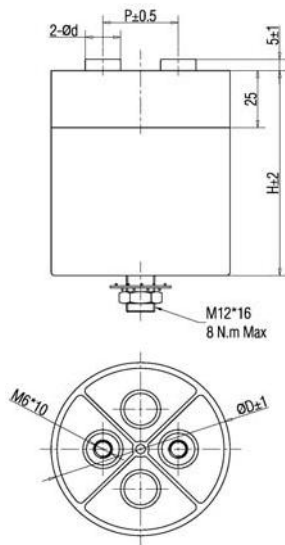


## XAE series / AC Filter



### GENERAL TECHNICAL CHARACTERISTICS

Reference Standards : IEC 61071-60068  
Dielectric : Polypropylene film  
Construction : Metallized film, Dry construction  
Coating : Aluminum case  
Leads: Threaded insert M5 M6, bolt available

### ELECTRICAL CHARACTERISTICS

Operating Temperature Range :  $-40$  to  $+85$  °C (case)  
Capacitance : 22 to 350  $\mu\text{F}$   
Rated Voltage : 400 to 850VDC (250 to 450Vac )  
Tolerance :  $\pm 5\%$  ,  $\pm 10\%$   
Dissipation Factor:  $\leq 2 \times 10^{-3}$  Measured at 100Hz and  $25 \pm 5$  °C  
Life Expectancy : 100,000 hours at  $U_n$  and 70 °C  
30,000 hours at  $U_{rms}$  and 70 °C  
(Hot-spot temperature)

### TEST METHODS AND PERFORMANCES

Dielectric Strength:  $1.5U_n$  (DC) applied for 10s at  $25 \pm 5$  °C  
Test Voltage Terminal to Case : 3kVAC/50Hz for 60s  
Insulation Resistance :  $\geq 10000$  s, after 1 minute of electrification  
at 100Vdc ( $25 \pm 5$  °C )

**Electrical Specifications, Ordering Codes**

Cap ( $\mu$ F)	D (mm)	H (mm)	P (mm)	I <sub>rms</sub> @25°C @10kHz	ESR@1.0k Hz	RTH (k/w)	Weight (kg)	Ordering Code
<b>Un 400VDC</b>	<b>Us 600V</b>	<b>Urms</b>	<b>250VAC</b>	<b>Upeak</b>	<b>360V AC</b>			
100	76	70	32.0	44	2.2	4.9	0.38	XAE-400-100-FS
150	76	125	32.0	53	1.9	3.7	0.75	XAE-400-150-FS
200	86	125	32.0	59	1.7	3.3	0.95	XAE-400-200-FS
250	76	180	32.0	68	1.6	2.6	1.00	XAE-400-250-FS
350	86	180	32.0	74	1.5	2.3	1.30	XAE-400-350-FS
<b>Un 600VDC</b>	<b>Us 900V</b>	<b>Urms</b>	<b>330VAC</b>	<b>Upeak</b>	<b>470V AC</b>			
45	76	70	32.0	31	2.9	7.0	0.38	XAE-600-45-FS
65	86	70	32.0	44	2.3	4.6	0.45	XAE-600-65-FS
100	76	125	32.0	52	1.9	3.7	0.75	XAE-600-100-FS
130	86	125	32.0	58	1.8	3.3	0.95	XAE-600-130-FS
150	76	180	32.0	67	1.7	2.6	1.00	XAE-600-150-FS
200	86	180	32.0	73	1.7	2.3	1.30	XAE-600-200-FS
<b>Un 700VDC</b>	<b>Us 1050V</b>	<b>Urms</b>	<b>400VAC</b>	<b>Upeak</b>	<b>570V AC</b>			
30	76	70	32.0	38	2.9	4.9	0.38	XAE-700-30-FS

40	86	70	32.0	41	2.6	4.6	0.45	XAE-700-40-FS
60	76	125	32.0	51	2.0	3.7	0.75	XAE-700-60-FS
80	86	125	32.0	57	1.9	3.3	0.95	XAE-700-80-FS
90	76	180	32.0	65	1.8	2.6	1.00	XAE-700-90-FS
125	86	180	32.0	71	1.7	2.3	1.30	XAE-700-125-FS
<b>Un 850VDC</b>	<b>Us 1275V</b>	<b>Urms</b>	<b>450VAC</b>	<b>Upeak</b>	<b>640V.AC</b>			
22	76	70	32.0	35	3.3	4.9	0.38	XAE-850-22-FS
28	86	70	32.0	39	2.9	4.6	0.45	XAE-850-28-FS
40	76	125	32.0	47	2.2	3.7	0.75	XAE-850-40-FS
55	86	125	32.0	54	2.0	3.3	0.95	XAE-850-55-FS
70	76	180	32.0	63	1.9	2.6	1.00	XAE-850-70-FS
90	86	180	32.0	69	1.8	2.3	1.30	XAE-850-90-FS

<b>XAE -</b>	<b>600 -</b>	<b>200-</b>	<b>F S</b>
Series	Voltage	Capacitance	Dimension and terminal

<b>F</b>	<b>M</b>	Terminals code, F for insert thread M for Lead screw
<b>S</b>		Bold code, stud mounting

## XAE Series – AC Filter